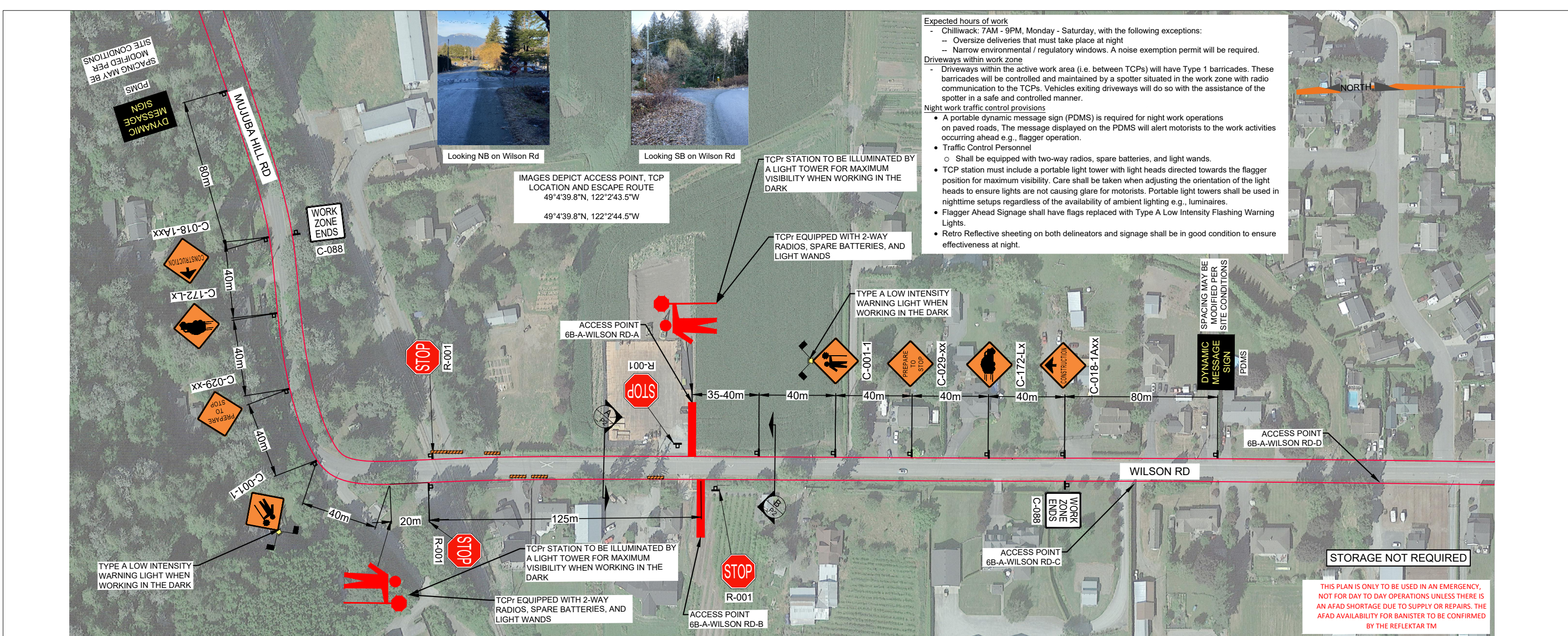


PROJECT: V:\Project Files\3431 - TMEP Spread 6B - Design\TCP\WAP-6B-A-WILSON RD-A & B.R1.2023-01-17.dwg  
 PLOT DATE: 11/7/2023 3:16 PM  
 PLOTTED BY: Pawane Navarathna



**Expected hours of work**

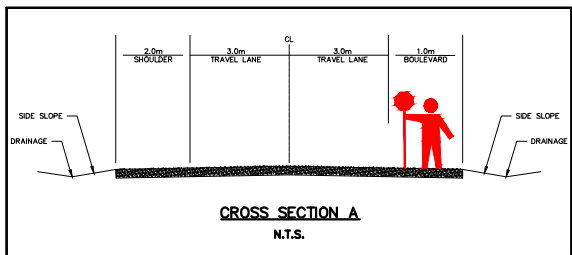
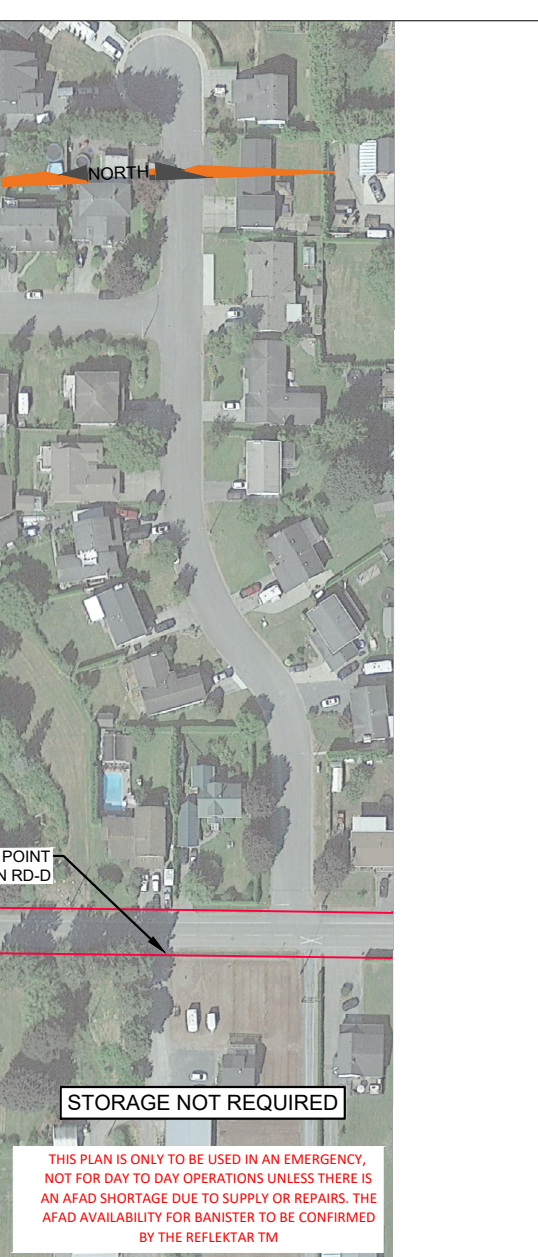
- Chilliwack: 7AM - 9PM, Monday - Saturday, with the following exceptions:
  - Oversize deliveries that must take place at night
  - Narrow environmental / regulatory windows. A noise exemption permit will be required.

**Driveways within work zone**

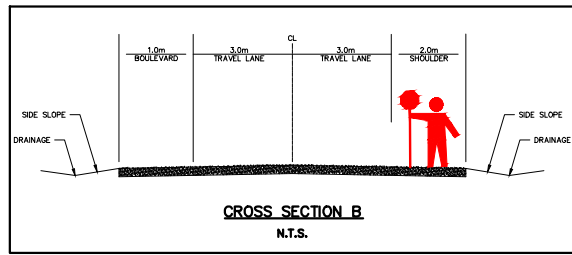
- Driveways within the active work area (i.e. between TCPs) will have Type 1 barricades. These barricades will be controlled and maintained by a spotter situated in the work zone with radio communication to the TCPs. Vehicles exiting driveways will do so with the assistance of the spotter in a safe and controlled manner.

**Night work traffic control provisions**

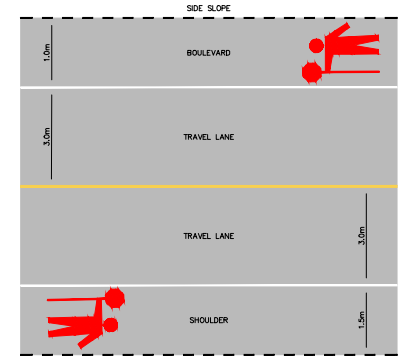
- A portable dynamic message sign (PDMS) is required for night work operations on paved roads. The message displayed on the PDMS will alert motorists to the work activities occurring ahead e.g., flagger operation.
- Traffic Control Personnel
  - o Shall be equipped with two-way radios, spare batteries, and light wands.
- TCP station must include a portable light tower with light heads directed towards the flagger position for maximum visibility. Care shall be taken when adjusting the orientation of the light heads to ensure lights are not causing glare for motorists. Portable light towers shall be used in nighttime setups regardless of the availability of ambient lighting e.g., luminaires.
- Flagger Ahead Signage shall have flags replaced with Type A Low Intensity Flashing Warning Lights.
- Retro Reflective sheeting on both delineators and signage shall be in good condition to ensure effectiveness at night.



NOTE: DIMENSIONS SHOWN ARE SITE SPECIFIC



NOTE: DIMENSIONS SHOWN ARE SITE SPECIFIC



NOTE: DIMENSIONS SHOWN ON PLAN VIEWS ARE SITE SPECIFIC

**LEGEND:**

- SIGN MARKER
- TCP CONTROL LOCATION
- ACCESS (6B-A-WILSON RD-A&B)
- TYPE 1 BARRICADE

**PERMIT TO PRACTICE**  
**WATT CONSULTING GROUP LTD**  
 SIGNATURE \_\_\_\_\_  
 DATE \_\_\_\_\_  
**PERMIT NUMBER: 1001432**  
**ENGINEERS & GEOSCIENTISTS**  
**BRITISH COLUMBIA**

SEAL:

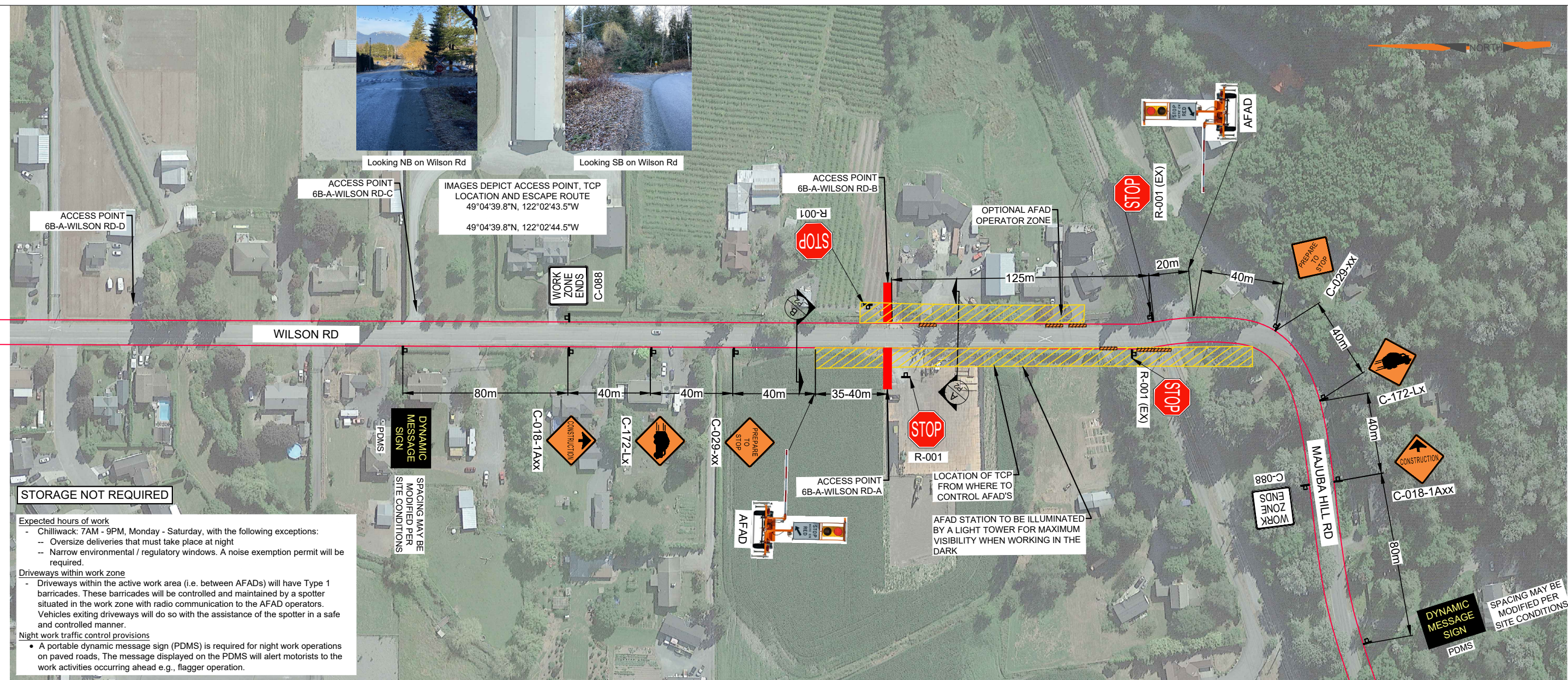
REVISIONS		0 25m 50m 100m			
0	ISSUED FOR IMPLEMENTATION	JAN 10-23	1:2,000		
1	ISSUED FOR IMPLEMENTATION	JAN 17-23	DESIGNED: CK	DRAWN: CK	CHECKED: KM
2			APRVD: KM	DESIGN SPEED: 50km/h	
3			DESIGN VEHICLE:		
4			PROJECT NO: 3431.B01		
5			DRAWING NO: 6B-A-WILSON-A&B-TCP_P2		
6			DATE: JAN 10, 2023		
7			REVISION: 1		
8					

**TITLE:**  
**TRAFFIC CONTROL LAYOUT**  
**AP 6B-A-WILSON RD-A&B-TCP**  
**BPLP TMEP SPREAD 6B**

Calgary, Edmonton, Lloydminster,  
 Okanagan, Vancouver, Victoria  
**WATT Consulting Group**  
[WATTCONSULTINGGROUP.COM](http://WATTCONSULTINGGROUP.COM)

PROJECT: V:\Project Files\3431 - TMEP Spread 6B - Design\AFAD\AP-6B-A-WILSON RD-A & B\_R2\_2023-01-17.dwg  
 PLOT DATE: 1/17/2023 3:03 PM  
 PLOTTED BY: Pawane Navarathna  
 These Design Documents are prepared solely for the use by the party with whom the Design Professional has entered into a contract, and there are no representations of any kind made by the Design Professional to any party with whom the Design Professional has not entered into contract.

YARROW CENTRAL RD



**STORAGE NOT REQUIRED**

**Expected hours of work**

- Chilliwack: 7AM - 9PM, Monday - Saturday, with the following exceptions:
  - Oversize deliveries that must take place at night
  - Narrow environmental / regulatory windows. A noise exemption permit will be required.

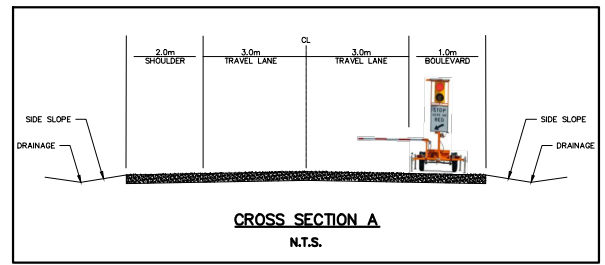
**Driveways within work zone**

- Driveways within the active work area (i.e. between AFADs) will have Type 1 barricades. These barricades will be controlled and maintained by a spotter situated in the work zone with radio communication to the AFAD operators. Vehicles exiting driveways will do so with the assistance of the spotter in a safe and controlled manner.

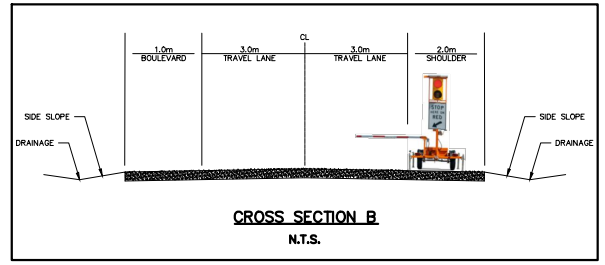
**Night work traffic control provisions**

- A portable dynamic message sign (PDMS) is required for night work operations on paved roads. The message displayed on the PDMS will alert motorists to the work activities occurring ahead e.g., flagger operation.

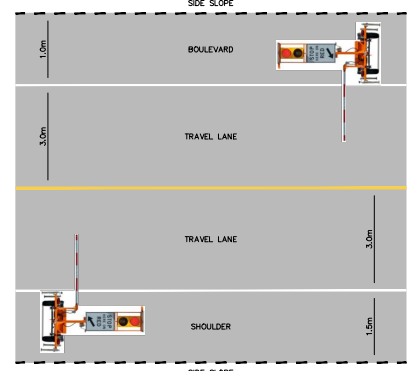
**SPACING MAY BE MODIFIED PER SITE CONDITIONS**



NOTE: DIMENSIONS SHOWN ARE SITE SPECIFIC



NOTE: DIMENSIONS SHOWN ARE SITE SPECIFIC



NOTE: DIMENSIONS SHOWN ON PLAN VIEWS ARE SITE SPECIFIC

**LEGEND:**

- SIGN MARKER
- AUTOMATED FLAGGER ASSISTANCE DEVICE (AFAD)
- TCP CONTROL LOCATION
- ACCESS (6B-A-WILSON RD-A&B)
- TYPE 1 BARRICADE

**PERMIT TO PRACTICE**  
**WATT CONSULTING GROUP LTD**  
 SIGNATURE \_\_\_\_\_  
 DATE \_\_\_\_\_  
**PERMIT NUMBER: 1001432**  
**ENGINEERS & GEOSCIENTISTS**  
**BRITISH COLUMBIA**

SEAL:

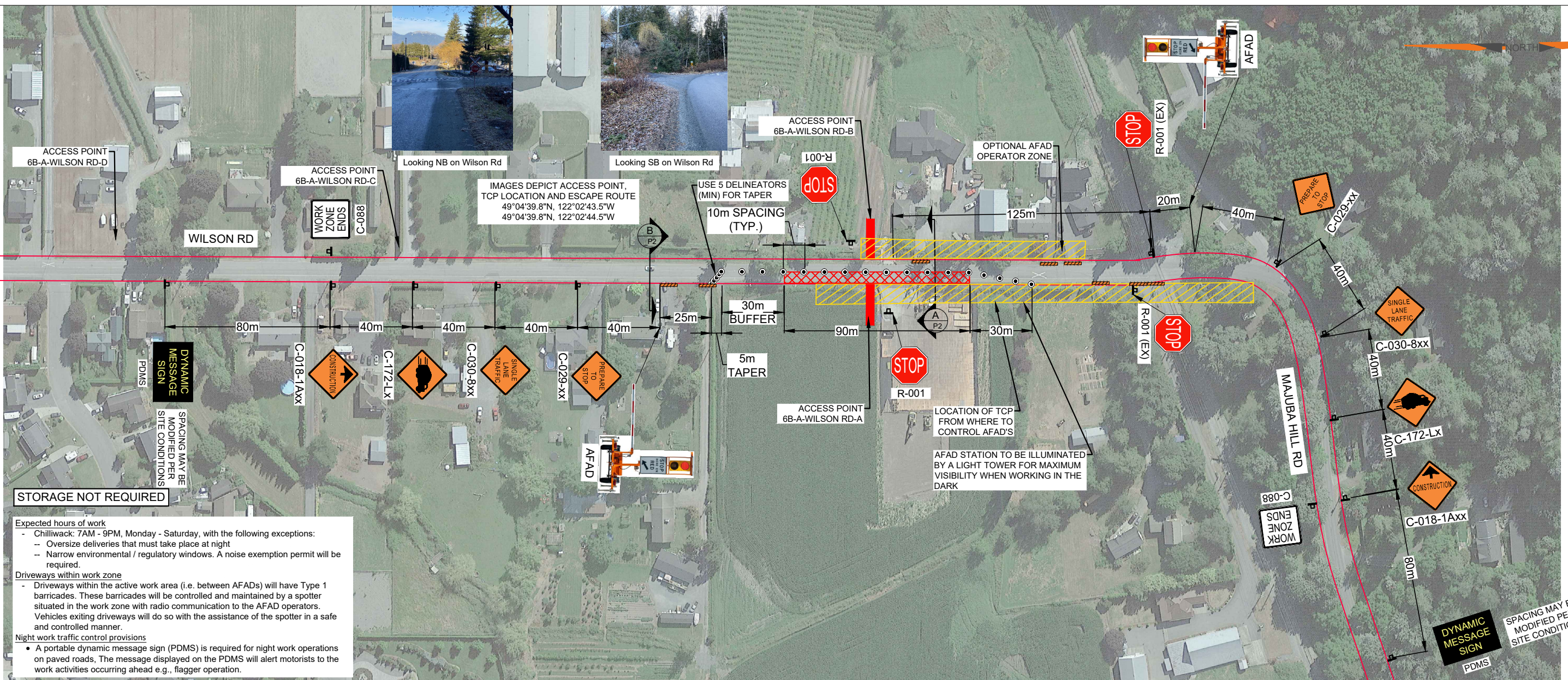
REVISIONS	
0	ISSUED FOR IMPLEMENTATION JAN 6-23
1	ISSUED FOR IMPLEMENTATION JAN 10-23
2	ISSUED FOR IMPLEMENTATION JAN 17-23
3	
4	
5	
6	
7	
8	

DESIGNED: CK	DRAWN: CK	CHECKED: KM	APRVD: KM
DESIGN VEHICLE:		DESIGN SPEED: 50km/h	
PROJECT NO: 3431.B01		DRAWING NO: 6B-A-WILSON-A&B_P2	
DATE: JAN 6, 2023		REVISION: 2	

**TITLE: TRAFFIC CONTROL LAYOUT**  
**AP 6B-A-WILSON RD-A&B**  
**BPLP TMEP SPREAD 6B**

Calgary, Edmonton, Lloydminster,  
 Okanagan, Vancouver, Victoria  
**WATT**  
 Consulting Group  
[WATTCONSULTINGGROUP.COM](http://WATTCONSULTINGGROUP.COM)

PROJECT: V:\Project Files\3431 - TMEP Spread 6B - Design\SLATAP-6B-A-WILSON RD-A & B-SLAT\_P2\_2023-01-17.dwg  
 PLOT DATE: 11/17/2023 3:36 PM  
 PLOTTED BY: Pawane Navarathna  
 These Design Documents are prepared solely for the use by the party with whom the Design Professional has entered into a contract, and there are no representations of any kind made by the Design Professional to any party with whom the Design Professional has not entered into contract.



**STORAGE NOT REQUIRED**

**Expected hours of work**

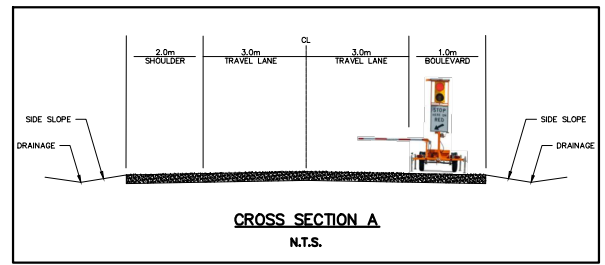
- Chilliwack: 7AM - 9PM, Monday - Saturday, with the following exceptions:
  - Oversize deliveries that must take place at night
  - Narrow environmental / regulatory windows. A noise exemption permit will be required.

**Driveways within work zone**

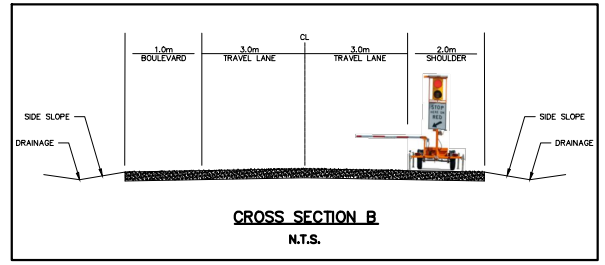
- Driveways within the active work area (i.e. between AFADs) will have Type 1 barricades. These barricades will be controlled and maintained by a spotter situated in the work zone with radio communication to the AFAD operators. Vehicles exiting driveways will do so with the assistance of the spotter in a safe and controlled manner.

**Night work traffic control provisions**

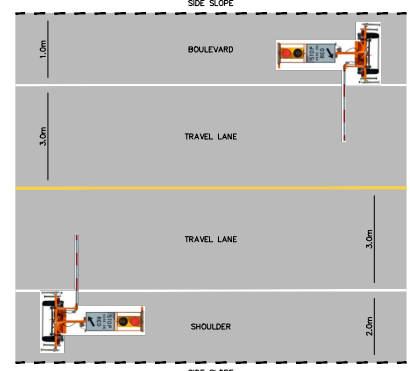
- A portable dynamic message sign (PDMS) is required for night work operations on paved roads. The message displayed on the PDMS will alert motorists to the work activities occurring ahead e.g., flagger operation.



NOTE: DIMENSIONS SHOWN ARE SITE SPECIFIC



NOTE: DIMENSIONS SHOWN ARE SITE SPECIFIC



NOTE: DIMENSIONS SHOWN ON PLAN VIEWS ARE SITE SPECIFIC

**LEGEND:**

- SIGN MARKER
- AUTOMATED FLAGGER ASSISTANCE DEVICE (AFAD)
- TCP CONTROL LOCATION
- ACCESS (6B-A-WILSON RD-A&B)
- WORK ZONE
- TYPE 1 BARRICADE

**PERMIT TO PRACTICE**  
**WATT CONSULTING GROUP LTD**  
 SIGNATURE \_\_\_\_\_  
 DATE \_\_\_\_\_  
**PERMIT NUMBER: 1001432**  
**ENGINEERS & GEOSCIENTISTS**  
**BRITISH COLUMBIA**

SEAL:

REVISIONS		0 25m 50m 100m			
0	ISSUED FOR IMPLEMENTATION	JAN 11-2023	1:2,000		
1	ISSUED FOR IMPLEMENTATION	JAN 16-23	DESIGNED: TV	DRAWN: TV	CHECKED: KM
2	ISSUED FOR IMPLEMENTATION	JAN 17-23	APRVD: KM	DESIGN SPEED: 50km/h	
3			PROJECT NO: 3431.B01		DRAWING NO: 6B-A-WILSON-A&B-SLAT_P2
4			DATE: JAN 11, 2023		REVISION: 2
5					
6					
7					
8					

TITLE: **TRAFFIC CONTROL LAYOUT**  
**AP 6B-A-WILSON RD-A&B-SLAT**  
**BPLP TMEP SPREAD 6B**

Calgary, Edmonton, Lloydminster,  
 Okanagan, Vancouver, Victoria  
**WATT Consulting Group**  
 WATTCONSULTINGGROUP.COM